

# Pulseway Heartbeat Analyzer

## Pulseway Heartbeat Analyzer Virtual Appliances for VMWare :

Image Version: VMware ESXi 5.5.0, 64 Bit

Requirements: HDD 100GB, RAM >= 8GB

Default IP: DHCP

Root / MySQL Password: master

Login: [http://\[ip-address\]/admin](http://[ip-address]/admin)

Username: admin, Password: master

Limitations: User management currently (still) not implemented. The various permissions are currently not used in this Version. All additional users needs to have in PHA-Web interface Administrators privileges (superuser right)

## Setup:

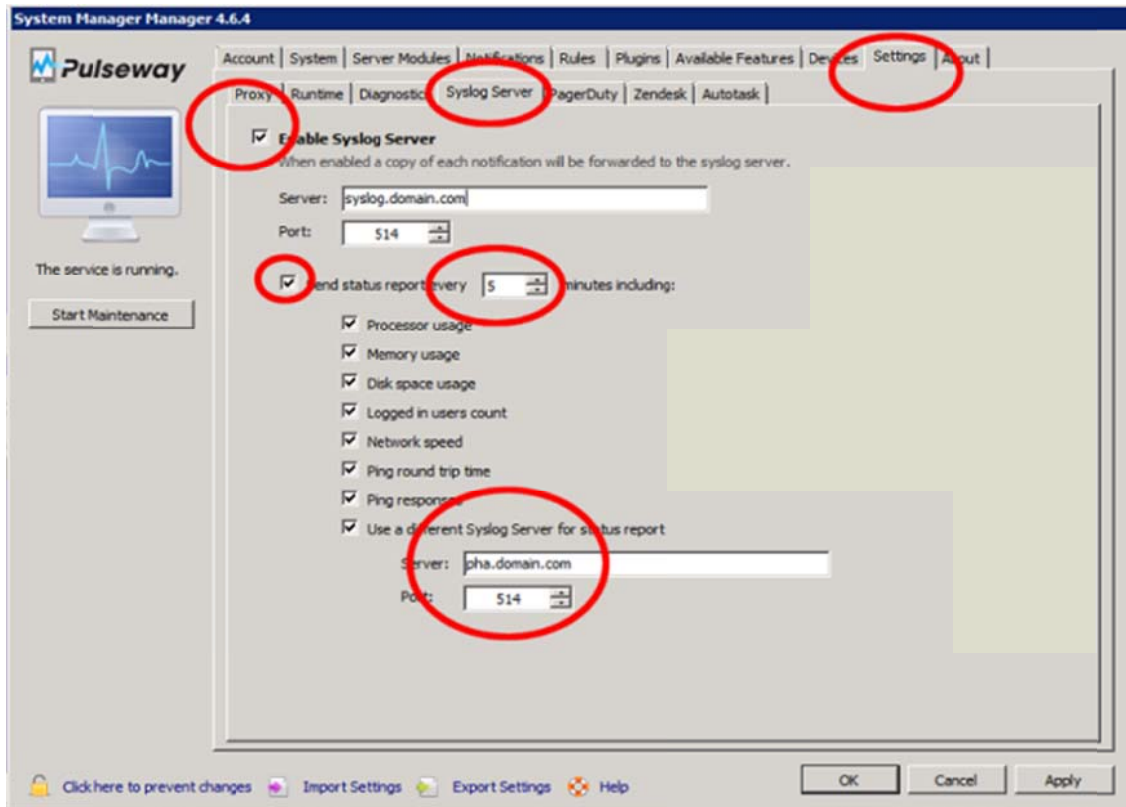
- Copy / convert the image to your VMWare infrastructure
- Setup IP-Settings: `nano /etc/network/interfaces`
- Setup Mail-Server-Settings: `nano /var/www/pha/settings.py` at

```
# email
DEFAULT_FROM_EMAIL = 'pha@localhost'
EMAIL_BACKEND = 'django.core.mail.backends.smtp.EmailBackend'
EMAIL_HOST = 'your.mailserver.com'
EMAIL_PORT = 25
EMAIL_USE_TLS = False
EMAIL_HOST_USER = ''
EMAIL_HOST_PASSWORD = ''
```

- Setup Pulseway-Settings: `nano /etc/pulseway/config.xml`
- Reboot Server: `init 6`

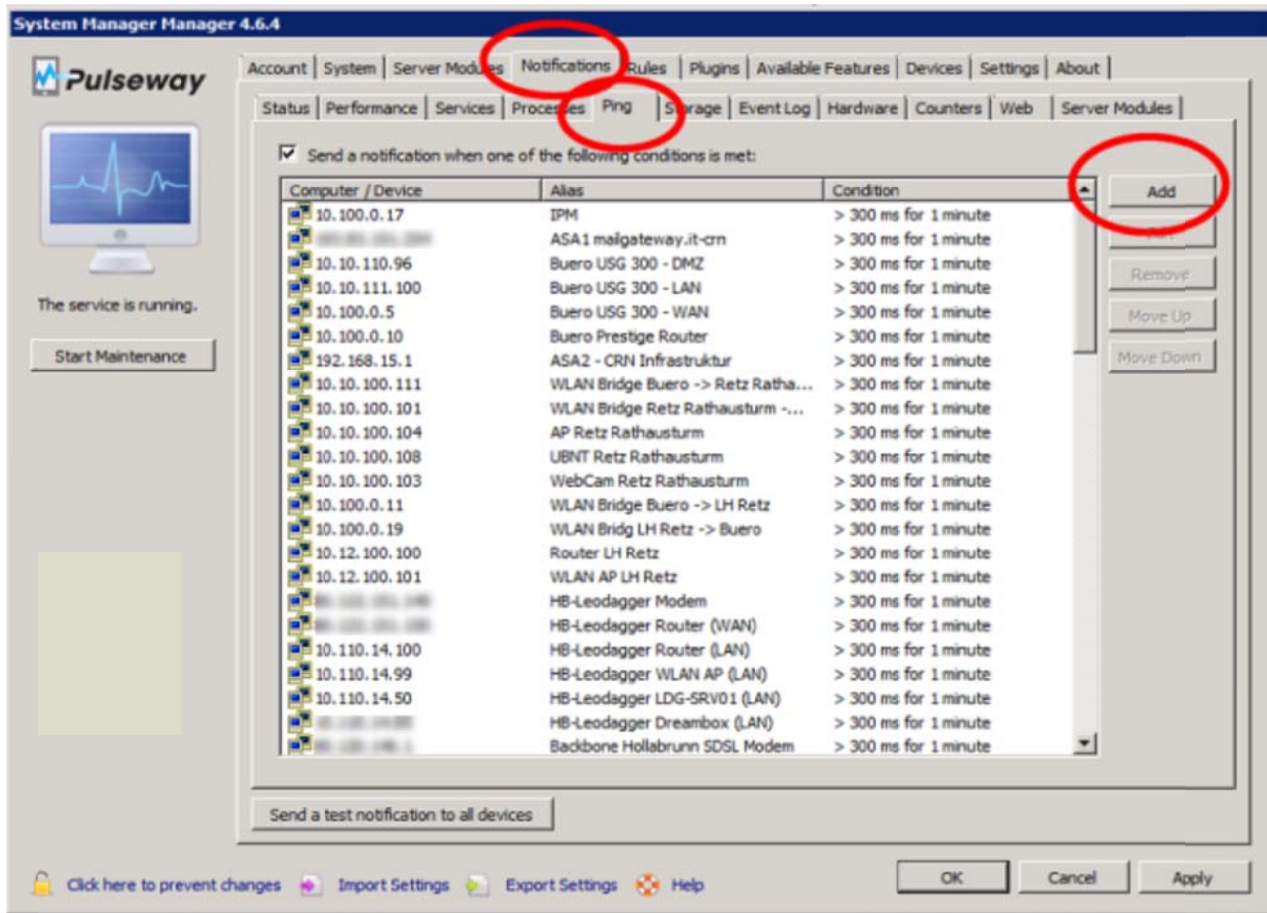
## Windows Pulseway Agent Setup:

- Enable Syslog Server



# Pulseway Heartbeat Analyzer

- Add IP Devices / Data Lines:



## Linux Pulseway Agent Setup:

- Edit Pulseway Config: `nano /etc/pulseway/config.xml`

```
<!--Send a copy of every notification to a syslog server
- Server: Hostname or IP of the syslog server
- Port: Port of the syslog server-->
<SyslogServer Server="syslog.domain.com" Port="514" Enabled="true">
  <!--Send a status report to the syslog server
  - ReportInterval: Status report send interval (in minutes)-->
  <SendStatusReport ReportInterval="5" Enabled="true">
    <!--Should the report include the processor usage-->
    <IncludeProcessorUsage Enabled="true"/>
    <!--Should the report include the memory usage-->
    <IncludeMemoryUsage Enabled="true"/>
    <!--Should the report include the disk space usage-->
    <IncludeDiskSpaceUsage Enabled="true"/>
    <!--Should the report include the logged in user count-->
    <IncludeLoggedInUsersCount Enabled="true"/>
    <!--Should the report include the network usage-->
    <IncludeNetworkSpeed Enabled="true"/>
    <!--Should the report include the ping round trip times-->
    <IncludePingRoundtripTime Enabled="true"/>
    <!--Should the report include the ping response times-->
    <IncludePingResponses Enabled="true"/>
    <!--Use a different Syslog Server for status report
    - Server: Hostname or IP of the status report custom server
    - Port: Port of the status report custom server-->
    <StatusReportUseCustomServer Server="pha.domain.com" Port="514" Enabled="true"/>
  </SendStatusReport>
</SyslogServer>
```

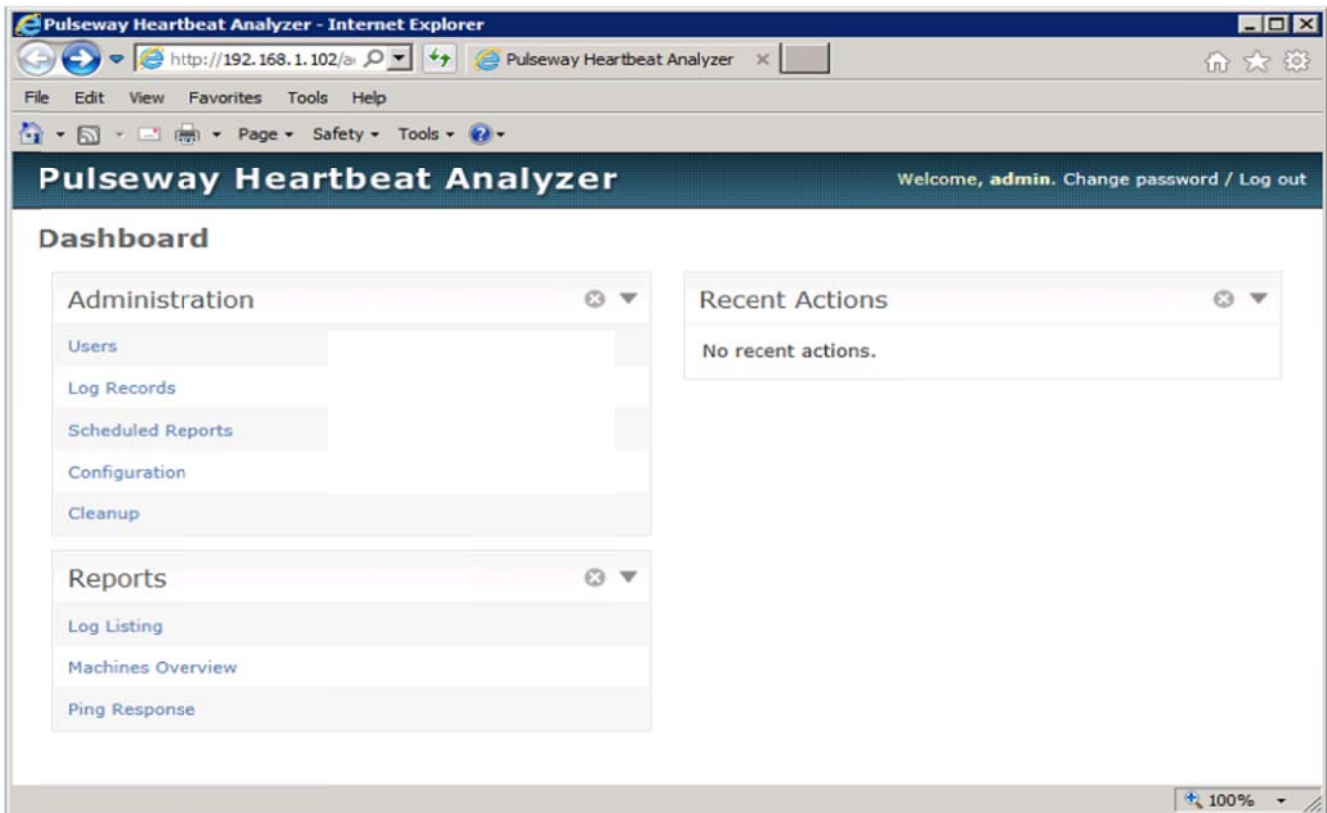
# Pulseway Heartbeat Analyzer

- add IP devices / Data Line:

```
<!--Ping Responses-->
<PingResponses>
  <!--PingResponse
- Address: IP address or hostname
- Milliseconds: a response value that defines a slow ping response
- Minutes: for how many minutes should the condition stay activated before a notification is sent
- PriorityOnSlowResponse: notification priority for the slow response notification
- PriorityOnNoResponse: notification priority for the no response notification
- Alias: display name -->
  <PingResponse Address="192.168.96.252" Milliseconds="50" Minutes="15" PriorityOnSlowResponse="1" PriorityOnNoResponse="1" Alias="" />
  <PingResponse Address="192.168.151.150" Milliseconds="50" Minutes="15" PriorityOnSlowResponse="1" PriorityOnNoResponse="1" Alias="" />
  <PingResponse Address="191.252.82.101" Milliseconds="50" Minutes="15" PriorityOnSlowResponse="1" PriorityOnNoResponse="1" Alias="" />
  <PingResponse Address="243.218.174.12" Milliseconds="50" Minutes="15" PriorityOnSlowResponse="1" PriorityOnNoResponse="1" Alias="" />
</PingResponses>
```

## Analyse Settings:

- Start Browser: <http://ip-address>



The screenshot shows the Pulseway Heartbeat Analyzer web interface accessed via Internet Explorer. The browser address bar shows the URL <http://192.168.1.102/>. The page title is "Pulseway Heartbeat Analyzer" and the user is logged in as "admin". The interface includes a navigation menu with "Administration" and "Reports" sections. The "Administration" section contains links for "Users", "Log Records", "Scheduled Reports", "Configuration", and "Cleanup". The "Reports" section contains links for "Log Listing", "Machines Overview", and "Ping Response". A "Recent Actions" box on the right indicates "No recent actions." The browser's zoom level is set to 100%.